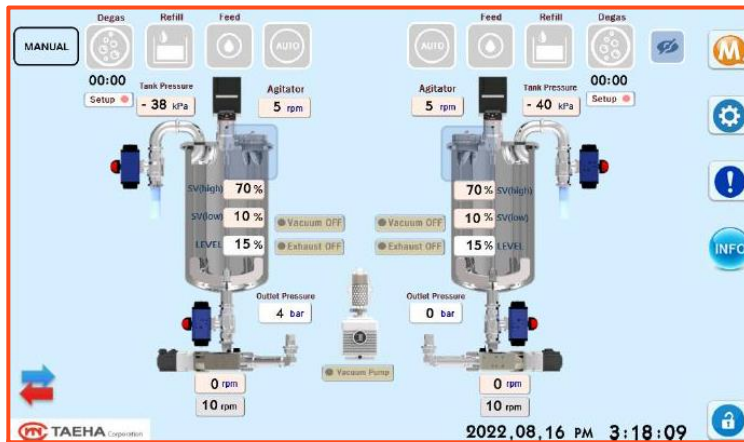


# ProPrep

## Intelligent Material Preparation and Feeding Solution

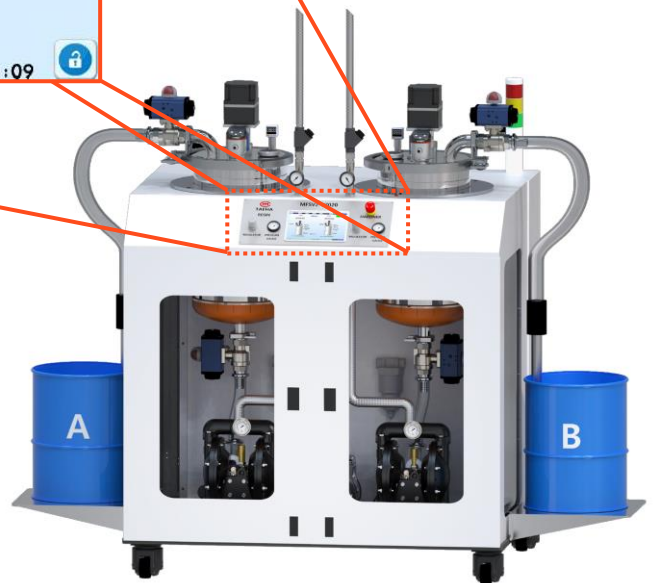
Data Sheet



Equipped with a user-friendly touch screen interface and specialized software, the **ProPrep** elevates material supply to a new level.

### Features

- Circulate
- Vacuum Degassing
- Low Level Control
- Automatic Refill
- Visible Alarm
- PLC Interface (Ethernet)
- Electric Agitation
- Portable Enclosure can be Vented
- Heat Optional
- Low Pressure Feed Supply

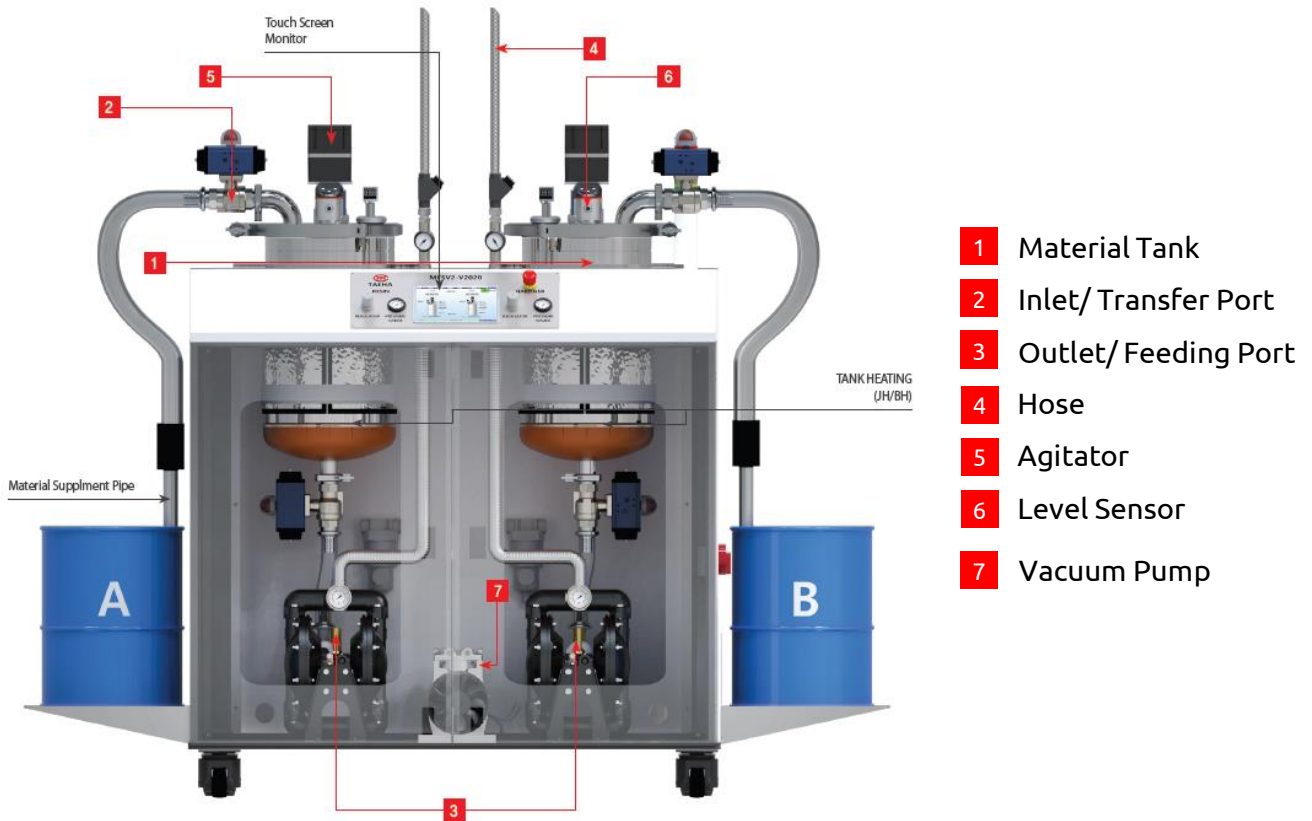


### Available Tank Capacity

- 20 L (5.28 Gal)
- 30 L (7.93 Gal)
- 50 L (13.21 Gal)
- 60 L (15.85 Gal)

The **ProPrep** provides a flexible, out-of-the-box solution for material supply and preparation, designed specifically for the reliable transport and conditioning of 1-component or 2-component materials. This system ensures a steady and uninterrupted delivery of materials, with automatic notifications when it's time to replenish your supply.

# ProPrep Component Diagram



- 1** Material Tank
- 2** Inlet/ Transfer Port
- 3** Outlet/ Feeding Port
- 4** Hose
- 5** Agitator
- 6** Level Sensor
- 7** Vacuum Pump

ITEM	BASIC SPECIFICATIONS
Dimension (W x H x D)	1780 x 1950 x 900 mm
	70.08 x 76.77 x 35.43 in
Weight	≈ 250kg
Power	AC220V, 50/60Hz
Power Consumption	250VA
Tank Size	20L, 30L, 50L, 60L
Operating Air Pressure	0.4~0.5 MPa (58.015~72.519 psi)
Feeding Air Pressure	0.1~0.5 MPa (14.504~72.519 psi)
User Interface	Touch PC (Windows10)
Temperature	10~40 °C
Humidity	10~85%RH
Vibration Resistant	Less than 0.5G
Controller	MSC-100